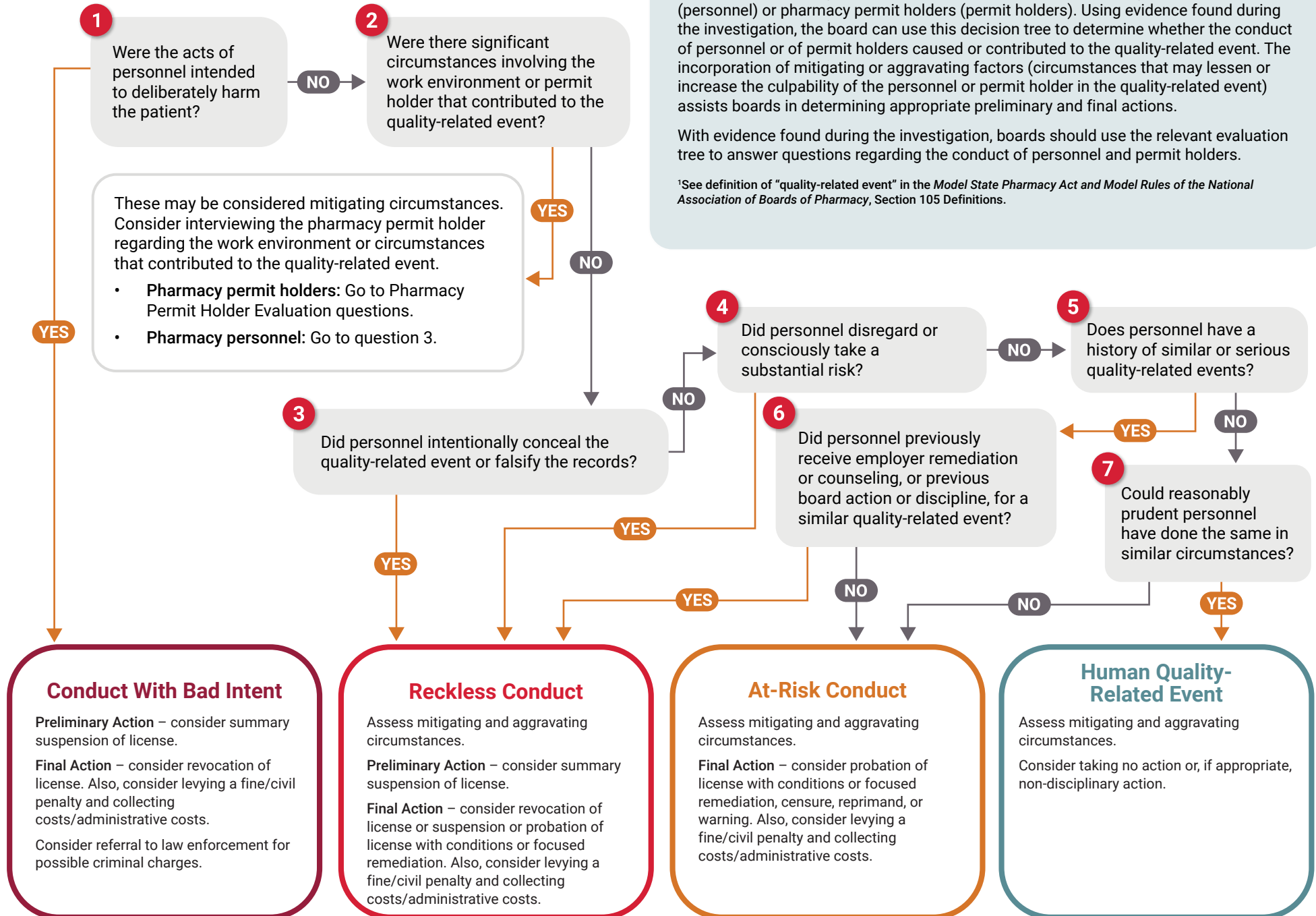


Board of Pharmacy Action Decision Tree – Pharmacy Personnel Evaluation

The Board of Pharmacy Action Decision Tree is designed to assist boards of pharmacy with evaluating quality-related events¹ involving licensed pharmacy personnel (personnel) or pharmacy permit holders (permit holders). Using evidence found during the investigation, the board can use this decision tree to determine whether the conduct of personnel or of permit holders caused or contributed to the quality-related event. The incorporation of mitigating or aggravating factors (circumstances that may lessen or increase the culpability of the personnel or permit holder in the quality-related event) assists boards in determining appropriate preliminary and final actions.

With evidence found during the investigation, boards should use the relevant evaluation tree to answer questions regarding the conduct of personnel and permit holders.

¹See definition of “quality-related event” in the *Model State Pharmacy Act and Model Rules of the National Association of Boards of Pharmacy*, Section 105 Definitions.



Board of Pharmacy Action Decision Tree – Pharmacy Permit Holder Evaluation

